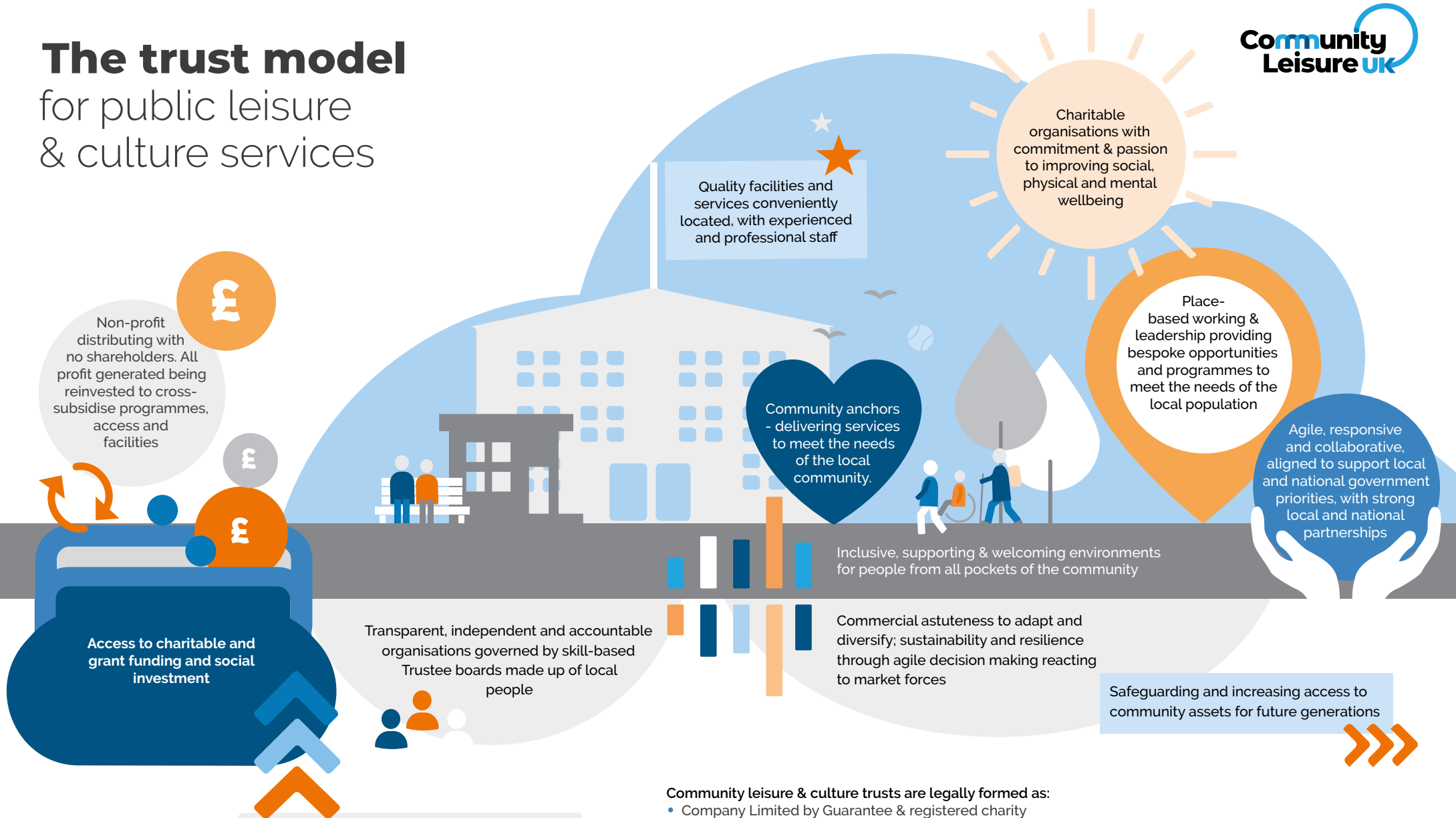


# The trust model

## for public leisure & culture services



Non-profit distributing with no shareholders. All profit generated being reinvested to cross-subsidise programmes, access and facilities

Quality facilities and services conveniently located, with experienced and professional staff

Charitable organisations with commitment & passion to improving social, physical and mental wellbeing

Place-based working & leadership providing bespoke opportunities and programmes to meet the needs of the local population

Community anchors - delivering services to meet the needs of the local community.

Agile, responsive and collaborative, aligned to support local and national government priorities, with strong local and national partnerships

Inclusive, supporting & welcoming environments for people from all pockets of the community

Commercial astuteness to adapt and diversify; sustainability and resilience through agile decision making reacting to market forces

Safeguarding and increasing access to community assets for future generations

Access to charitable and grant funding and social investment

Transparent, independent and accountable organisations governed by skill-based Trustee boards made up of local people

Significantly contributing to their local economy through local employment, training and skills development, and offering career pathways

### Community leisure & culture trusts are legally formed as:

- Company Limited by Guarantee & registered charity
- Society with charitable status
- Community Interest Company (CIC)
- Charitable Incorporated Organisation (CIO)
- Scottish Charitable Incorporated Organisation (SCIO)
- Trusts are regulated by the Charity Commission, OSCR (Office of the Scottish Charity Regulator) or the FCA (Financial Conduct Authority)

For further information, please visit [communityleisureuk.org](http://communityleisureuk.org)

@CommLeisureUK