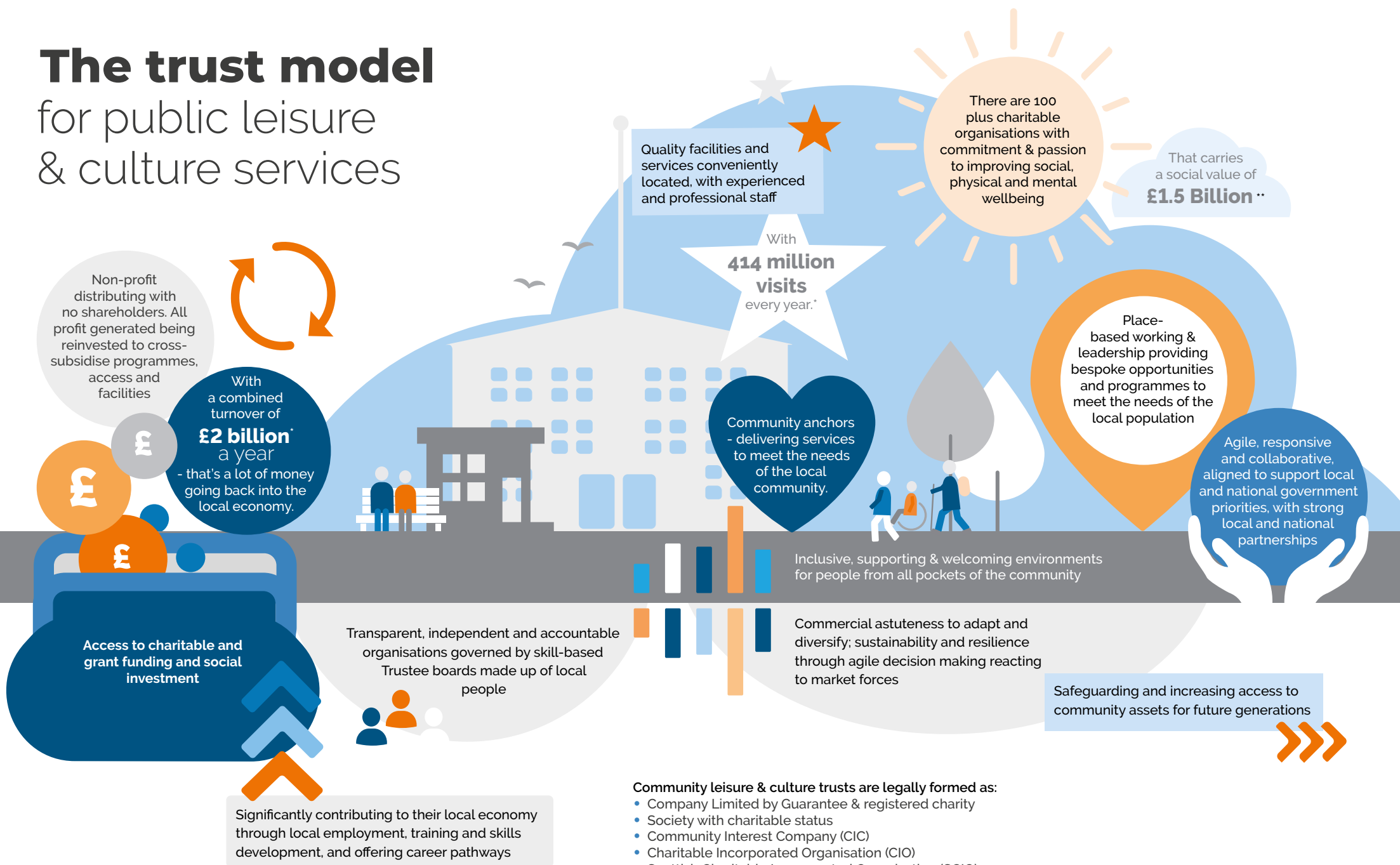


The trust model

for public leisure & culture services



* Based on 2019 data.

** Figure from Moving Communities using the social value calculator developed by Sheffield Hallam University in partnership with 4global and Experian.

Community leisure & culture trusts are legally formed as:

- Company Limited by Guarantee & registered charity
- Society with charitable status
- Community Interest Company (CIC)
- Charitable Incorporated Organisation (CIO)
- Scottish Charitable Incorporated Organisation (SCIO)
- Trusts are regulated by the Charity Commission, OSCR (Office of the Scottish Charity Regulator) or the FCA (Financial Conduct Authority)

For further information, please visit communityleisureuk.org

@CommLeisureUK